

FOR LEASE

Commercial Property

10520 E 12th St, Tulsa, Oklahoma 74128



Property Information

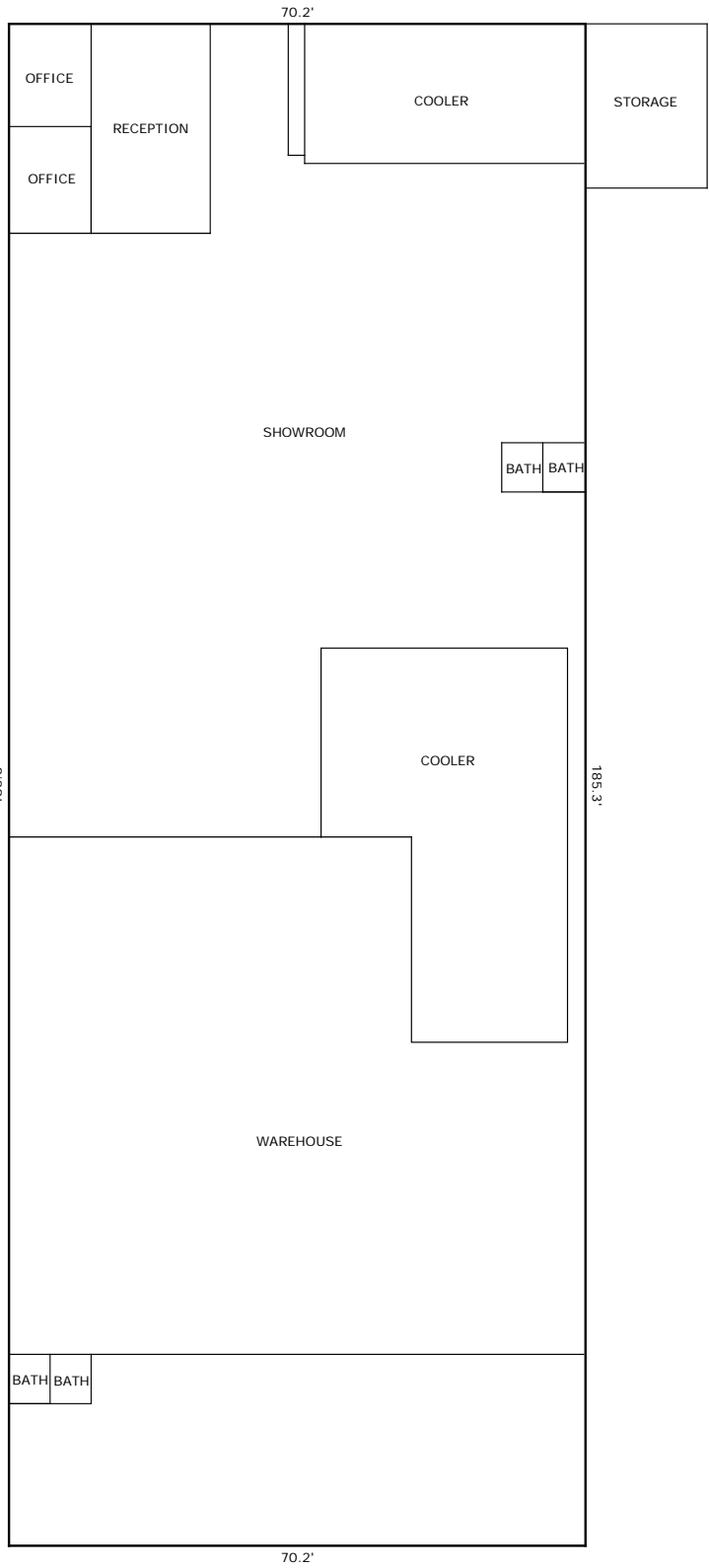
- Building Area:
Office - 625 SF +/-
Warehouse - 12,383 SF +/-
TOTAL: 13,008 SF +/-
- Building Type:
Prefabricated Metal / Metal
Exterior
- Year Built:
1973 (1989 Remodel)
- Zoned: CS (Commercial
Shopping)
- Building:
2 OH Doors
Insulated Liner Panels
Ample Lighted Skylights
6" Concrete Floor
- Lot:
0.80 +/- Acres
Dock Well
Parcial Hard Surfaced

Former Wholesale Florist with Large Coolers
Showroom, Office and Warehouse



Contact information
MIKE COULTER CCIM, SIOR
COULTER & ASSOCIATES REALTORS
Phone 918-640-9848
Email michaelcoulter8@gmail.com

The information contained herein has been given to us by the owner of the property or other sources we deem reliable, we have no reason to doubt its accuracy, but we do not guarantee it. All information should be verified prior to purchase or lease.



Area Calculations Summary

Living Area	Calculation Details
Office-Warehouse	13008.06 Sq ft 70.2 × 185.3 = 13008.06
Total Living Area (Rounded):	13,008 Sq Ft