

1150 NORTH PEORIA AVE.
TULSA, OKLAHOMA 74106



FOR LEASE

1150 North Peoria



Coulter
REALTORS®

For more info contact:

Ryan Coulter | (918) 978-0009 | ryan@coulterrealtors.com | www.coulterrealtors.com

Building Summary

**1150 North Peoria Avenue
Tulsa, Oklahoma 74106**

Total Building:	37,000 s.f. +/-	Overhead Bridge Cranes	Three 5 Ton Two 2 Ton
Building Construction:	Steel frame with metal skin.	Total Office:	500 s.f. +/- Recently Renovated 2 Offices
Total Land Size:	6 Acres +/-	2010 Taxes:	\$
Year Constructed:		Utilities:	
Zoned:	Industrial Light(IL)	Electric:	AEP/PSO 3 phase, 200/100 AMP, 600 V
Parking:	Large Parking Area	Gas:	ONG
Yard:	Large Fenced Area	Water/Sewer:	City of Tulsa
Total Warehouse:	37,000 s.f +/- 2 restrooms		
Dock High Doors:	2		
Drive-In Doors:	7 Total Two 20'W X 16'H Four 10'W X 12'H One 6'W X 10'H		
Clear Height:	19'6" +/-		

Disclaimer: The information on this flyer are collected from sources we deem to be reliable. However, Coulter & Associates, REALTORS does not guarantee the accuracy of any of the information. As a buyer or tenant, it is your responsibility to verify the accuracy of any information.

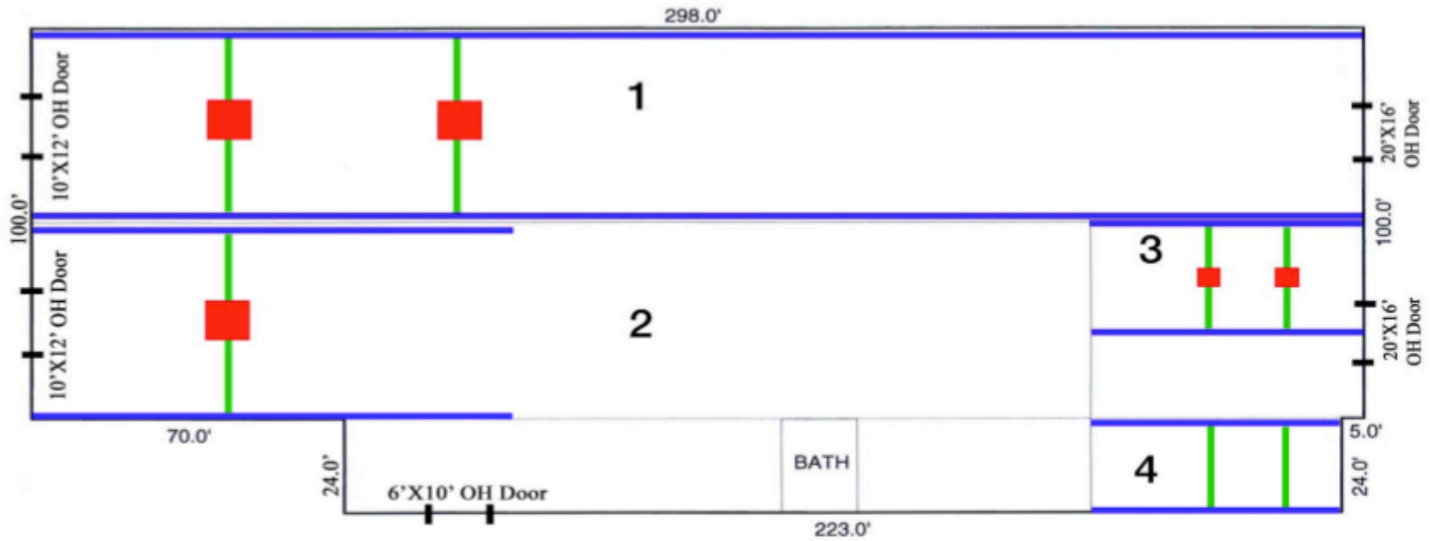


For more info contact:

Ryan Coulter | (918) 978-0009 | ryan@coulterrealtors.com | www.coulterrealtors.com

Building Layout

1150 North Peoria Avenue
Tulsa, Oklahoma 74106



Bay 1 * (2) 5 Ton Cranes
 * 12' Hook Height
 * 298' Run
 * 48' Span
 * 19.6' Clear Height

Bay 2 * (1) 5 Ton Crane
 * 12' Hook Height
 * 119' Run
 * 48' Span
 * 19.6' Clear Height

Bay 3 * (2) 2 Ton Cranes
 * 15.3' Hook Height
 * 56' Run
 * 24' Span
 * 19.6' Clear Height

Bay 4 * No Cranes
 * (2) 24' Span Bridges
 * 56' Run
 * 19.6' Clear Height

— Crane Rails
 — Bridges
 — Cranes



For more info contact:

Ryan Coulter | (918) 978-0009 | ryan@coulterrealtors.com | www.coulterrealtors.com