

13406 SOUTH MEMORIAL DRIVE
BIXBY, OKLAHOMA 74008



FOR SALE OR LEASE

13406 S. Memorial Dr.



Coulter
REALTORS®

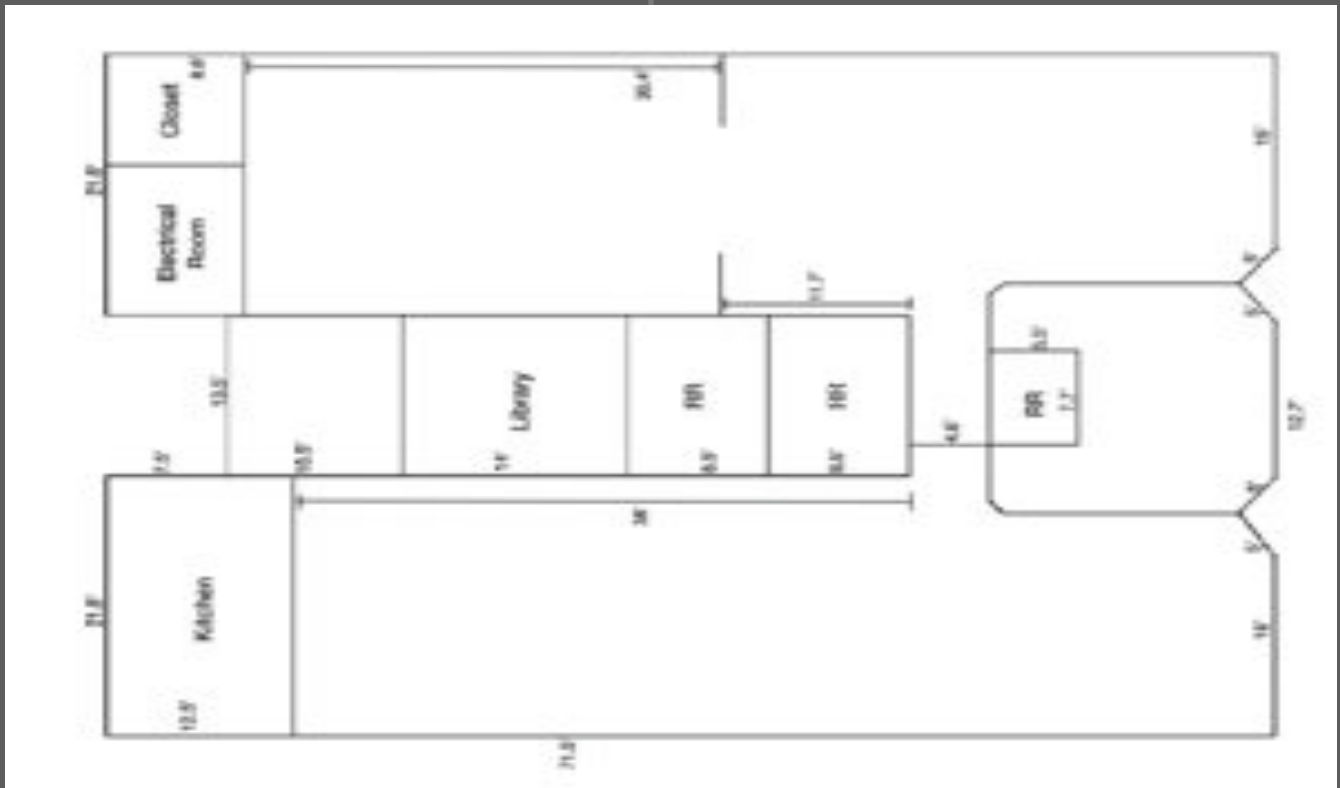
For more info contact:

Mike Coulter | (918) 640-9848 | mike@coulterrealtors.com | www.coulterrealtors.com

Building Summary

13406 SOUTH MEMORIAL DRIVE BIXBY, OKLAHOMA 74008

- 3,928 s.f. Office/Retail/Day Care Building
- Located on main corridor to rapidly expanding Bixby, Oklahoma, the fastest growing community in Oklahoma
- 163' of frontage on Memorial
- Zoned CG (Commercial General)
- 29,098 s.f. of land
- Building Constructed in 2000
- Formerly used as a day care facility



Disclaimer: The information on this flyer are collected from sources we deem to be reliable. However, COULTER REALTORS does not guarantee the accuracy of any of the information. As a buyer or tenant, it is your responsibility to verify the accuracy of any information.



For more info contact:

Mike Coulter | (918) 640-9848 | mike@coulterrealtors.com | www.coulterrealtors.com